



# AssetView™ Data Portal Services

## AssetView™ or Raw Data Feeds- You Choose

The AssetView™ Data Portal is the single point of access to account information. The standard portal includes terminal management, message routing, and group administration. You can add, update or discontinue unit operations or view messages by unit. You can review message status and configure routes to forward messages individually. Additionally, you can create and manage groups within your account. AeroAstro provides a standard data portal to each customer free of charge. Alternately, you can choose to receive raw data feeds via ftp, email, or web services. Accounts are billed a monthly access fee and a per message fee, and prepaid message packs are available.

## Online Provisioning

AssetView™ makes provisioning easy. You can use the portal to provision all of your units online, either one at a time or in bulk. AssetView™ provides a simple GUI interface which allows you to setup and configure your units individually or in batches.

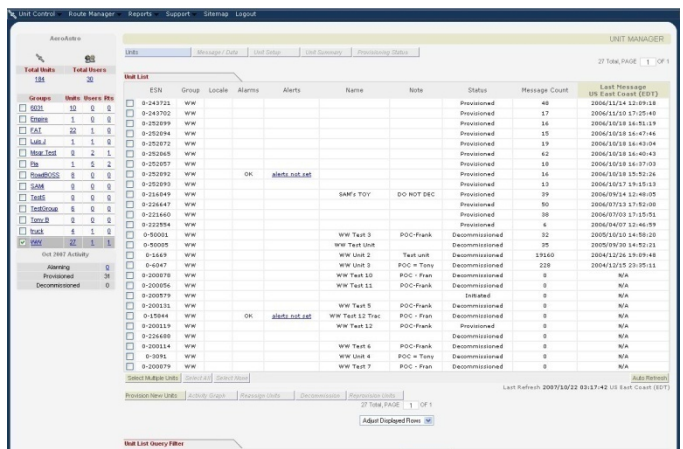
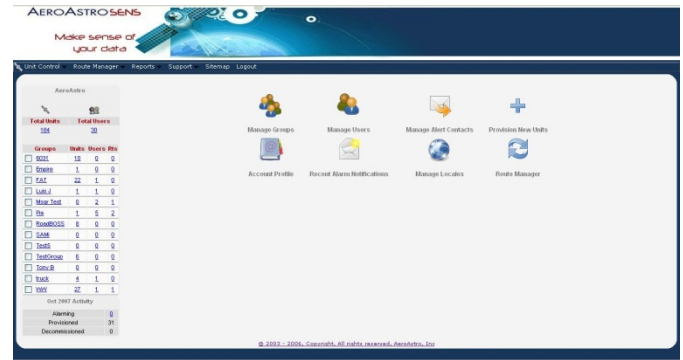
## Data Delivery via Email, SMS, Fax, etc...

AeroAstro offers more data delivery options than any other data service provider. Messages can be retrieved via the web, email, voice, ftp, pager or fax. The AssetView™ Data Portal can also forward the data to a user-designated site, and can route the data differently depending on contents for alarms or other conditions.

## Voice Alert Messaging via Phone

AeroAstro offers voice messaging using VXML. We provide both an alert service which calls you with notifications (VoiceAlert) and a dial-in service which allows you to call in to the AssetView™ data portal to check on the status of your assets (DialDirect).

To order remote tracking hardware, transmitters, or data management services, please contact AeroAstro at 866.631.6010 or info@sensservice.com.



# Mapping AssetView™ Data Features

## Mapping

AeroAstro offers a variety of mapping solutions utilizing maps from several sources to offer our users the greatest level of flexibility. Maps are annotated to show asset location and location history. Additional features like links to other pages, higher quality maps, and satellite photos can be added at the user's request. AeroAstro offers mapping solutions ranging from simple DEMIS maps to more sophisticated maps such as GoogleEarth from Google™ or Mapquest®.

## GeoFencing

GeoFencing allows users to set up a perimeter for operations for their assets and sound an alert if that perimeter is violated. Unlike other GeoFencing methods that require laborious programming, AeroAstro's system allows users to simply draw a polygon directly on a map in Google Earth to define their geofencing area. Multiple areas can be defined, saved and applied to various units in a fleet.

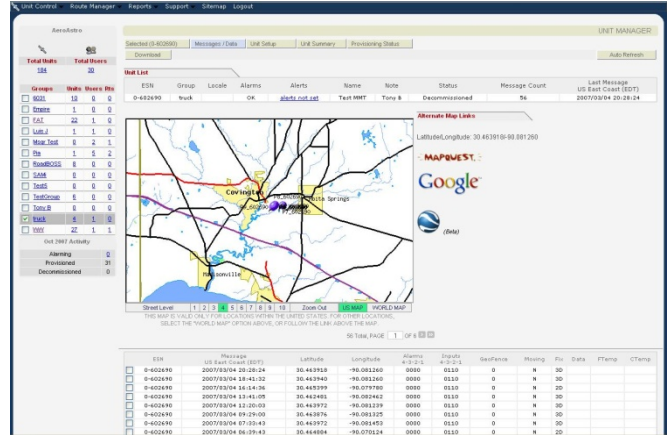
The AssetView™ Data Portal identifies geofencing violations and sends emails, text messages, or other alarms to user PCs and wireless devices. The email text can be defined by the user.

## Customization

AeroAstro provides portal customization services. We can brand your site with your logo and color palette. We can also develop custom reports and data views as well as unique portal functionality. The AssetView Data Portal can be customized to display the information you want how you want it.

## About AeroAstro

AeroAstro is the only one-stop shop offering all SENS Data Services and related products on one invoice. AeroAstro provides complete, end-to-end support for our Value Added Resellers and their market specific products. As the designer and builder of the SENS Data Service, AeroAstro is in a unique position to assist VARs in all aspects of developing, implementing, and servicing their applications, hardware, communications, and data display.



20145 Ashbrook Place  
Ashburn, VA 20147  
info@sensservice.com  
www.aeroastro.com  
www.sensservice.com

t: 703.723.9800  
f: 703.723.9850